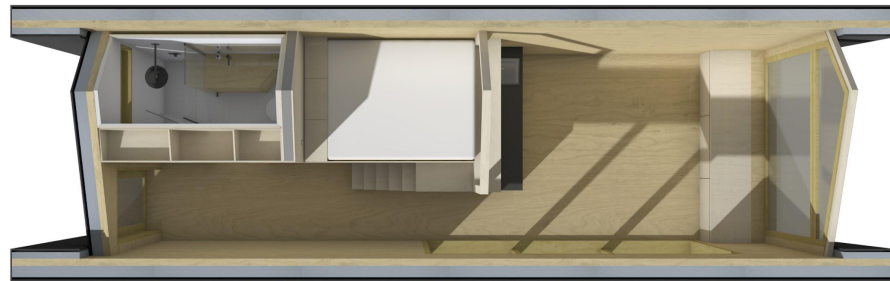
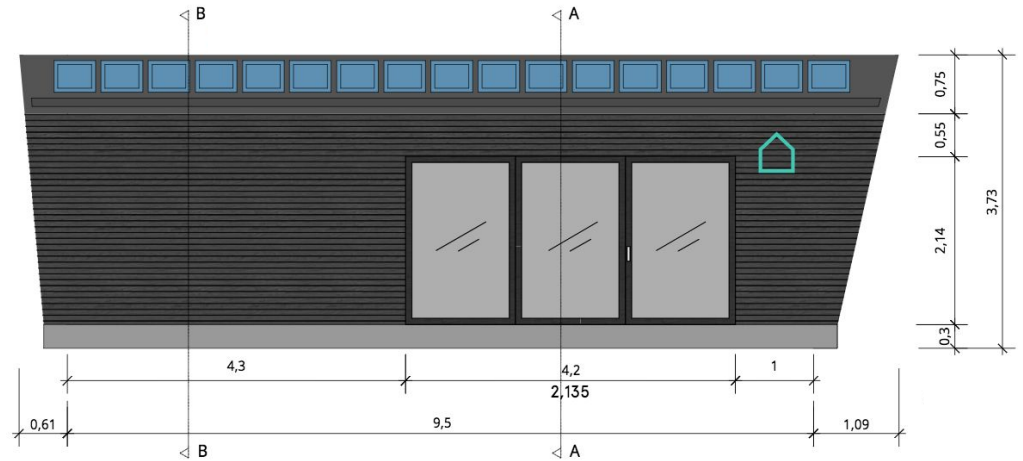




CABIN SPACEY



CABIN SPACEY mission

The CABIN SPACEY minimal house offers flexible, sustainable, innovative living space on almost thirty square meters. A minimal home for maximum freedom - Thanks to its modular design, the house is produced in the factory and then delivered in one piece to the desired location. Ready to dwell.

CABIN SPACEY

building data

width	3.46	m
height	3.73	m
length	10,1	m
weight	13	t
footprint	34.9	m ²
square footage	24.5	m ²
energy efficiency	EnEV 2014 / EnEV ab 2016	
fire protection	fire-resistance class F30	

windows & doors

2 roof window VELUX typ GGL & GGU	0,78 x 1,34	m
1 gable window triple glazing wood-aluminium	2,63 x 2,49	m
1 sliding door triple glazing wood-aluminium	2 x 2,1 x 2,14	m
1 front door triple glazing wood-aluminium mortise lock increased burglar protection	1,01 x 2,14	m

materials construction

wall

CABIN SPACEY

wall construction from inside to the outside	19 mm	3-layer panel spruce
	90 mm	glulam solid wood wall spruce
facade	140 mm	wood fibre insulation
	30 mm	ventilation
	24 mm	rhombus silver fir pre-aged

floor slab

floor construction from inside to the outside	wood flooring oak, oiled
	engineered wood for static reinforcement
	wood fibre insulation fibre board fit into the wood joists
	wood frame construction from locally sourced spruce

roof

roof construction	3-layer panel spruce I-Joists
	wood fibre insulation shuttering OSB
	ventilation
	double standing seam roofing
	zinc sheeting

interior

built-in furniture	3-layer panel spruce white varnished
---------------------------	---

equipments

The equipment can be customized by arrangement

kitchen

CABIN SPACEY

fridge Bosch	137 l	A++
dishwasher Bosch	60 cm	A+++
washer dryer combo Bosch	capacity 4 - 7.3 kg	A
induction hob Bosch	4 cooking zones	7.4 kW
coffee machine Bosch	fully automatic	1.6 kW
sink Blanco	38 x 40 x 19 cm	stainless steel
fitting Grohe Red Duo	supplies boiling water	chrome- coloured
storage wall units	67 x 30 x 28 cm	3 shelves

sleeping

loft bed with Casper mattress	160 x 200 cm	latex & memory foam
storage mit USB-charging station	55 x 25 x 29 cm	3 shelves
roof window Velux	78 x 134 cm	remote controlled & programmable

equipments

daylight bathroom

CABIN SPACEY

shower	Rainshower system 65 x 111 cm, level-access
fittings Grohe	chrome-coloured
toilet Keramag	rimless
sink Keramag	countertop 600 x 480mm
storage	wash basin, 3 shelves
roof window Velux	remote controlled & programmable, 78 x 134 cm
sound system Sonos	2 Wifi speaker

entrée

dashboard	central control unit via iPad, Tado°, Nuimo
smart mirror	information panel
storage	5 shelves 7 drawers
bench	with shoe cabinet

studio

lounge in panoramic window	60 x 287 cm expandable to guest bed 120 x 280 cm
sound system Sonos	2 Wifi speaker

equipments**building services**

CABIN SPACEY

underfloor-heating	hydronic system
water tank	180l buffer tank for drinking water & underfloor-heating
connections	CEE 32A male to 63A female broadband internet
ventilation system	basic ventilation 25m ³ /h required ventilation 40m ³ /h
PV system	covers 60% of energy demand (based on 2-person household with energy demand of 1500 kwh)

foundation

installation on strip foundation	depending on ground conditions
---	--------------------------------

thermal transmittance

external walls	0,222	W/m ² K
roof	0,194	W/m ² K
floor slab	0,249	W/m ² K
windows	<1,3	W/m ² K

CABIN SPACEY

certificates

wood	sustainability	PEFC™ PEFC / 06-32-12
adhesive	Formaldehyd- abgabe E1	eph CT-13-08-13-02
construction	earthquake safety	TU Graz "Saismic Performance of Multi-Storey Timber Buildings



CABIN SPACEY

Nuimo

Smart home meets design: Nuimo focuses on the essentials, with simple inputs that control one or many of your favorite connected devices.

Smart Mirror

Whether the tomorrow's weather or your personal social media feed, the Smart Mirror lends your heart and soul to the CABIN SPACEY minimal house.

Bosch Einbaugeräte

Enjoy the benefits of the future with Bosch kitchen appliances: Thanks to the Home Connect App, the individual built-in appliances can be controlled and monitored.

Velux Integra®

The innovative system of remote controlled windows connects you with the outside world with just one touch of the control pad. Use the predefined programmes, or create your own based on your needs.

Sonos One

The smart WIFI speaker for music lovers - The Sonos One is connected to different music services and can even be operated via voice control.

PV-Anlage

Using the energy of the sun: The solar panels on the roof supply the cabin with electricity.



CABIN SPACEY

The way to your CABIN SPACEY minimal house

Depending on the equipment and scope, prices start at around **65,000 EUR** net.

How can we help you?

You are looking for the right minimal house for your project? We are happy to advise you:

- + We take care of the feasibility check of your property and the required building applications
- + we take over the planning of logistics and construction
- + we customize the equipment individually to your needs
- + you can bring in your wishes and ideas for the interior design

Just contact us for your personal offer.

e-mail // youare@cabinspacey.com

phone // 0176 4111 87 97